

DS RAZOR

for eDirectory/NDS and NetWare

Interactive Management and Reporting for
eDirectory/NDS and NetWare File Systems

Ready-to-Run Applets

Visual Click Software, Inc.

Copyrights

This manual contains proprietary information that is protected by copyright. The information in this manual is subject to change without notice. No part of this manual may be reproduced or transmitted in any form or by any means, electronic or mechanical, including photocopying and recording, for any purpose other than the licensee's personal use without prior written permission of Visual Click Software. The software described in this manual is furnished under a license granted by Visual Click Software to the licensee. This software may be used or copied only in accordance with the terms of the license agreement.

© 2007 Visual Click Software, Inc. **All rights reserved.**

Trademarks

DSRAZOR® and Visual Click® are registered trademarks of Visual Click Software, Inc. Novell®, NetWare®, NDS®, ConsoleOne®, GroupWise®, ZENworks®, and BorderManager® are registered trademarks and eDirectory™, NetWare Loadable Module™, NLM™, and Client32™ are trademarks of Novell, Inc. Microsoft® and Windows® are registered trademarks of Microsoft Corporation in the United States and other countries. Other marks cited in this document are the property of their respective owners.

Patents

U.S. Patent No. 6,438,742

Issue Date: August 20, 2002

Documentation Conventions

Special information in this manual is presented using the following conventions:

- **Bold** text indicates commands, command-line options, and interface controls, such as the names of icons, menus, menu items, buttons, checkboxes, and tabs.
- *Italic* text indicates variables that must be replaced with a value. It also indicates book titles and emphasized terms.
- `Monospace` text indicates data to enter, filenames, and code examples.

NOTE:	Provides information that emphasizes or supplements important points in the main text.
IMPORTANT:	Provides information essential to the completion of a task. Do not disregard an important note.

Contact Us

Thanks for using DSRAZOR. Visual Click Software is committed to the ongoing support of its products. For information and the latest downloads of the DSRAZOR product, see the website at <http://www.visualclick.com/>. For information, help, and to report problems associated with this product, or if needing features or functionality that are not currently offered by Visual Click Software, contact the customer support team at support@visualclick.com. To purchase additional licenses, contact the sales team at sales@visualclick.com.

Contact us at the following mailing address:

Visual Click Software, Inc.
P.O. Box 161657
Austin, TX 78716

Pubrev 051007

Introduction

DSRAZOR is an authoring tool that allows you to create network management applications called **applets**. You do not need to know programming or do any scripting. Instead, DSRAZOR uses drag-and-drop controls that you arrange within a familiar tree structure to create applets that perform various tasks.

More than 140 pre-designed applets are included with DSRAZOR for eDirectory/NDS and NetWare. These applets perform such tasks as listing user accounts that are expired, locked, or whose last login is greater than 30 days ago. DSRAZOR helps you design interactive applets using any of its predefined applets or customizing your own.

When you first use DSRAZOR for eDirectory/NDS and NetWare, you are presented with the **Console**, which contains a menu of the predefined, ready-to-run applets.

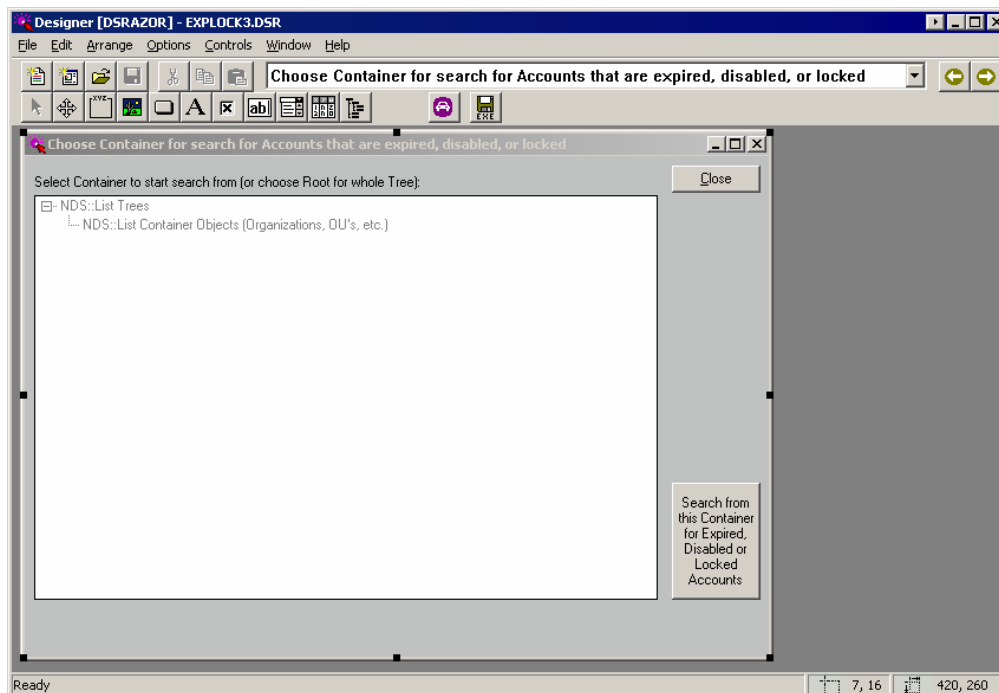


DSRAZOR for eDirectory/NDS and NetWare Console

The eDirectory/NDS and NetWare product includes everything in the DSRAZOR **Console**, **except** the following:

- The applets listed under the GroupWise Menu Header
- The Import Users + GW Dist List Membership from CSV applet (which requires tokens from **both** DSRAZOR for GroupWise and DSRAZOR for eDirectory/NDS and NetWare)

Each applet in the **Console** showcases specific features of DSRAZOR for eDirectory/NDS and NetWare. The applets run as Windows applications; you can customize an applet functionally and visually using DSRAZOR's **Designer** tool. Since most applets rely on the user's permissions to complete their duties, your user account must be sufficiently privileged for your results to be complete.



DSRAZOR for eDirectory/NDS and NetWare Designer

The DSRAZOR for eDirectory/NDS and NetWare **Designer** also enables you to create your own applets. The **Designer** provides numerous modular tools (called **services**) to assist you in constructing applets.

You can also perform any of the following tasks using the DSRAZOR for eDirectory/NDS and NetWare **Designer**:

- Editing an applet so that data is presented in a particular manner
- Combining applets
- Modifying the list of applets displayed in the **Console**
- Displaying your organization's logo or another graphic at the top of the **Console**

DSRAZOR applets are saved as ***.DSR** files. When you select an applet to use in the **Console**, the executable file **DSRRUN.EXE** is launched with the selected **.DSR**. You can open any applet with the **Designer** and save the **.DSR** as an **EXE** file that can be distributed independently of the **Console**.

Descriptions of eDirectory/NDS and NetWare Ready-to-Run Applets

The following sections describe the applets found in the DSRAZOR for eDirectory/NDS and NetWare **Console**.

NOTE: DSRAZOR for eDirectory/NDS and NetWare ready-to-run applets enable you to turn any list of results into an instant report. Right-clicking over a list of results allows you to immediately save and/or export the list results in a variety of formats. This feature is automatic in every DSRAZOR for eDirectory/NDS and NetWare applet.

The applets are ordered in this section as they are in the **Console**:

- [Assess NDS Security](#)
- [Query and Search NDS](#)
- [HelpDesk Examples](#)
- [NDS User Maintenance](#)
- [Examine Servers/Disks](#)
- [ZENworks Maintenance](#)

As you use the **Console**, you will notice the following option in all categories **except** HelpDesk examples:

[Request the Report you need here]

The applets packaged with DSRAZOR for eDirectory/NDS and NetWare can be readily customized to meet your specific needs. Once you are familiar with the services and control objects used in the applets, you will be able to create almost any solution you need in less than 10 minutes. Double-click this option for information on requesting help to build an applet or requesting that Visual Click's Tech Support Team create the applet for you.

Category: Assess NDS Security

The applets available from this menu are useful for assessing and maintaining your eDirectory/NDS security. See Visual Click Software's website (<http://www.visualclick.com/>) for information on our DSMETER solution for additional eDirectory/NDS security and auditing tools.

Accounts That Are Expired, Disabled or Locked

[EXPLOCK3.DSR]

Use this applet to find eDirectory/NDS accounts that are expired, disabled or locked. This applet allows you to select which container level of an eDirectory/NDS Tree you want to search from.

Accounts That Have Never Logged In

[NOLOGIN4.DSR]

Use this applet to find eDirectory/NDS user accounts that have never had a login. This applet allows you to select which container level of an eDirectory/NDS Tree you want to search from.

Accounts Unused for Past 30 Days

[NOLGN30A.DSR]

Use this applet to find eDirectory/NDS user accounts that have logged in at some time, but not in the past 30 days. This applet allows you to select which container level of an eDirectory/NDS Tree you want to search from.

Accounts with Password Problems

[PWDPROB1.DSR]

Use this applet to find eDirectory/NDS user accounts that have one of the following irregularities:

- Minimum password length is not set.
- No password is required.
- Expiration interval has not been set or is greater than 30 days.
- Expiration date/time has already expired.
- The minimum password length is less than 8 characters.

The criteria can be edited in the **Designer** to fit your organization's password standards.

This applet allows you to select which container level of an eDirectory/NDS Tree you want to search from.

Accounts with Personal Login Scripts

[**PERSLGN1.DSR**]

Use this applet to find eDirectory/NDS user accounts with a personal login script. This applet allows you to select which container level of an eDirectory/NDS Tree you want to search from.

Automated "Batch Mode" Report (Sample)

[**OTFCSV2.DSR**]

Creates a comma-delimited output file of the LAN board information of each server to which the user is attached.

This applet does not display an interface to the user. It automatically creates the file **OTFCSV2.CSV** in the directory from which this applet was run.

This applet serves as an example of any applet that saves its output to a file without first displaying it onscreen. Sending output directly to a file can save time for large reports, and you can set it up to run unattended (like this applet) or scheduled (for example, as an **EXE** using Windows Task Scheduler).

There is also a second window - not used by this applet - that **could** be used as an Output-to-File applet. It lists eDirectory/NDS users that have not logged in for the past 30 days that are in a container that you must define in the **Designer** before use.

Many DSRAZOR applets can be changed to run in Batch Mode for automation. Contact Visual Click's Tech Support Team if you would like assistance in setting up this function.

Containers with Login Scripts

[**CNTNLGN1.DSR**]

Use this applet to find eDirectory/NDS containers with a login script. This applet allows you to select which container level of an eDirectory/NDS Tree you want to search from.

Containers with No Objects

[**CNTN0A.DSR**]

Use this applet to find eDirectory/NDS containers that are empty. This applet allows you to select which container level of an eDirectory/NDS Tree you want to search from.

Document Access to Sensitive File System Directory

[**PRIVHER5.DSR**]

This sample applet lists all users, groups and containers with access to the selected directory, what file system rights they have, and how they obtained these rights.

Document Account Security Details

[ACTSTR.DSR]

Lists users (within a selected container and subcontainers) with the following security information:

- Enabled/disabled status
- Login-time restrictions (yes/no)
- Presence of a personal login script
- Number of maximum login attempts (concurrent connections)
- Station restrictions (network address restriction)
- Intruder lockout status
- Account expiration date
- Time/date of last login

Select [Root] to list all users in the eDirectory/NDS Tree.

NOTE: You can modify this applet in the **Designer** to add buttons to change any of these attributes for one selected user or for all users displayed.

Document Effective File System Rights

[DOCEFF6.DSR]

Reports the effective file system rights for users or groups. This applet is set to list the first two directory levels.

IMPORTANT: To change the directory depth, you must edit the service – not the rule – in the **Designer**.

Document Organizational Roles

[ORGRLE1.DSR]

Lists user objects (within an eDirectory/NDS Tree or container) and their organizational roles or lists organization roles and their members.

Document Password Settings Strength

[PWDSTR.DSR]

Lists users and conveniently displays the following information:

- Whether password is required
- Whether password must be unique
- Minimum password length

- Password expiration interval
- Whether user can change own password
- Maximum number of grace logins

NOTE: You can customize this applet in the **Designer** to manage the columns of password information that are displayed, add buttons to change the Password attribute values for one selected user or all users, or change the rules.

Document Security Equivalences

[SEC-EQU2.DSR]

Lists all objects (or just users) within an eDirectory/NDS Tree or container with security equivalences to anyone (or just to Admin).

Find Accounts Unused for 30,90,180 Days

[3090C.DSR]

This applet lists user accounts that have not been accessed for the past 30, 90, and 180 days as well as accounts that never logged in, expired accounts, and disabled accounts. You can opt to smart delete accounts, which will delete the eDirectory/NDS user, home directory structure, and GroupWise account. If there is a GroupWise account present, you can delete it either by using GroupWise client on your workstation or, if you do not have the GroupWise client installed, by copying the GroupWise 5.5 administrator DLLs into your DSRAZOR directory. You can use the GroupWise 5.5 DLLs with GroupWise versions 5.5 through 6.5.

How Were File System Rights Obtained

[TRUSTWAY.DSR]

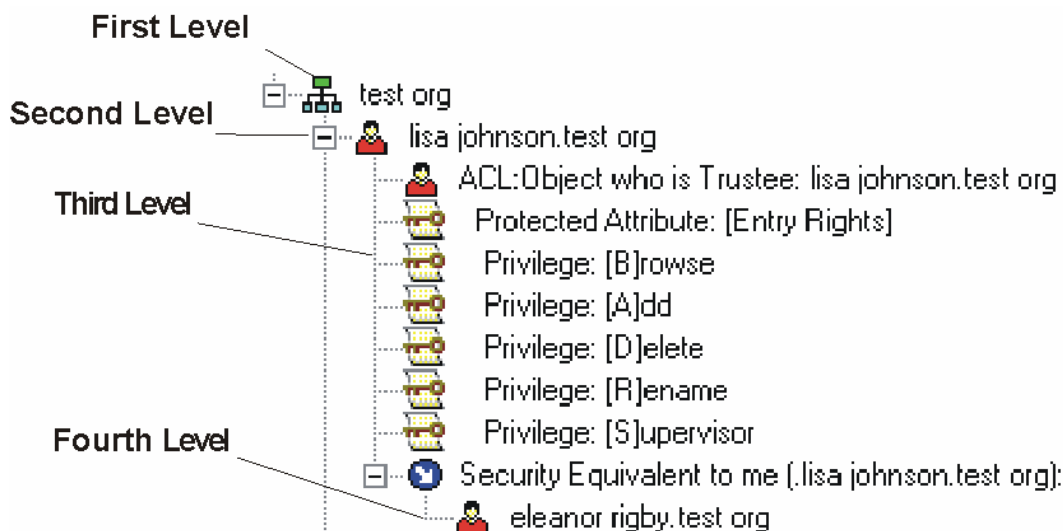
This applet allows you to determine how an eDirectory/NDS user or object obtained rights to a selected file system object (e.g. were they assigned directly or through group membership, etc.?).

Objects (All) with NDS S or W Rights

[S_W_NDS4.DSR]

This applet lists all eDirectory/NDS objects that have trustees with [S]upervisor or [W]rite privileges as well as what those privileges are.

NOTE: This applet does **not** list objects that are their own trustees.



TreeView of Objects with Privileges

Objects (Container) with NDS S or W Rights

[S_W_NDS6.DSR]

This applet lists all eDirectory/NDS container objects that have trustees with [S]upervisor or [W]rite privileges as well as what those privileges are. Refer to the figure entitled "TreeView of Objects with Privileges".

- **First Level of List:** eDirectory/NDS container objects with [S]upervisor trustees
- **Second Level of List:** eDirectory/NDS objects that are Supervisors
- **Third Level of List:** The specific eDirectory/NDS privileges that these objects have
- **Fourth Level of List:** Users (or others) who have security equal to the object at the second level and, therefore, are also Supervisors

NOTE: This applet does **not** list objects that are their own trustees.

Objects (Container) with NDS S, C or W Rights

[SWC_NDS2.DSR]

This applet lists all eDirectory/NDS container objects that have trustees with [S]upervisor, [C]reate or [W]rite privileges as well as what those privileges are. Refer to the figure entitled "TreeView of Objects with Privileges".

- **First Level of List:** eDirectory/NDS container objects with such trustees
- **Second Level of List:** eDirectory/NDS objects that are Supervisors
- **Third Level of List:** What specific eDirectory/NDS privileges they have
- **Fourth Level of List:** Users (or others) who have security equal to the object at the second level and, therefore, are also Supervisors

NOTE: This applet does **not** list objects that are their own trustees.

Objects That Have an IRF Defined

[IRFDEF1.DSR]

This applet lists all eDirectory/NDS objects with an Inherited Rights Filter (IRF).

Set File System Rights + Create Directory

[MDFSR.DSR]

This applet allows you to create new file system paths on multiple volumes. Once you have created these paths, you can assign file system trustees for existing or newly created directories.

Set File System Rights for Existing Directory

[FSR.DSR]

This applet resets file system rights to eDirectory/NDS objects in existing directories.

Set File System Rights of All Subdirectories

[MASSFSR.DSR]

This applet assigns the same file system rights to all existing file system trustees in the immediate subdirectories of a selected directory (file system rights in the **selected** directory are excluded). A common use for this applet is the removal of Access Control from many home directories at once.

Where Is Account an NDS Trustee

[WHEREIS.DSR]

This applet enables you to define a search for any eDirectory/NDS object that has a **specified** object as a trustee. All trustee assignments are returned - even attribute-specific ones.

IMPORTANT: To change the user queried, you must edit this applet in the **Designer**.

Who Has Access to a Specific File

[AUTO2.DSR]

This applet searches the selected eDirectory/NDS Tree for all users who have access to **SYS:SYSTEM\AUTOEXEC.NCF** on each server in the selected eDirectory/NDS Tree.

IMPORTANT: To change the file queried, you must edit this applet in the **Designer**.

Category: Query and Search NDS

The applets available from this menu are useful for querying and searching your eDirectory/NDS structure.

Document BorderManager Access Rules

[BM2.DSR]



This applet can assist you in documenting BorderManager access rules for eDirectory/NDS containers and NetWare servers.

Document File Trustee Assignments

[USERTR4.DSR]

This applet locates all eDirectory/NDS users/groups in a selected container and lists all their (explicitly) assigned file system rights. All eDirectory/NDS volumes in your tree will be located, and you may save the volume list for later use so that you do not have to rebuild the list each time you want to check file system rights. You may edit the comma-delimited file to specify which volumes you want to search.

Document Group Membership

[GLISTA.DSR]

This applet finds groups in an eDirectory/NDS Tree and lists their members. Select a container to display the groups in it.

Document GroupWise Distribution List Membership

[GWDLDOC2.DSR]

This applet displays the members of a selected GroupWise distribution list.

Document Trustees by Directory

[TRBYDIR1.DSR]

This applet displays directories and the eDirectory/NDS objects that have (explicitly) assigned file system rights to those directories. Directories up to four levels deep in a volume are displayed.

IMPORTANT: To change the directory depth, you must edit the service – not the rule – in the **Designer**.

Find Accounts with Expiring Passwords

[PWDEXP1.DSR]

Finds users whose password will expire either tomorrow or 7-14 days from now. To change the time span, edit this applet in the **Designer**.

Find Duplicate NDS User Accounts

[USERDUPS.DSR]

Produces a list of all users in your eDirectory/NDS Tree. Click **Find Duplicates in List** to reduce the list to just those user accounts with duplicate common names (CN).

Find Home Directories with No Trustees

[HDNOTRST.DSR]

This applet produces a list of the user home directories in your eDirectory/NDS tree with no trustees.

GroupWise Users and Their FIDs

[GWFIDB2.DSR]

This applet finds all GroupWise users in a selected container and lists the following information about them:

- GroupWise visibility
- FID
- Mailbox expiration
- Post office

Login Scripts - Archive

[ARCHLS.DSR]

This applet archives login scripts from users, containers, profiles, etc., to a *.CSV file.

NDS Partition Status Report

[PARTSTAT.DSR]

This applet finds all NetWare eDirectory/NDS servers beginning with the selected container and the partitions located on those servers and their synchronization status data.

Raw NDS Object View

[RAWNDS1.DSR]

This applet exposes all attributes and technical details of the selected eDirectory/NDS object.

Search by GroupWise FID

[GWFIDS.DSR]

This applet queries eDirectory/NDS objects by GroupWise FID or partial string.

Search for Any Object by Name

[SRCH1.DSR]

This applet queries eDirectory/NDS objects by full name or partial string.

Search for Users with Network Address(es)

[NETSRCH1.DSR]

This applet lists all users in a container branch who have a network address and displays number of network addresses found, the first three network addresses, and last login time/date. You can edit this applet in the **Designer** to display more than three addresses.

Simple User Details View

[USERW5.DSR]

This applet displays all users in a selected container and their group memberships, trustee assignments, and NAL associations.

User Creation Time Report

[CREATET.DSR]

This applet lists user objects and their creation, last modified, and last login times/dates.

User Phone Number Search

[PHONE1.DSR]

This applet finds a specified user and displays that user's phone number. This applet serves as a sample of any applet that searches for user objects and displays attributes. To display different attributes of the user object, edit this applet in the **Designer**.

Category: HelpDesk Examples

Technically, all applets can be HelpDesk solutions. However, the applets available from this menu are especially suited for this purpose.

NOTE: To use HelpDesk applets on workstations on which DSRAZOR is not installed, you must save the applets as **.EXE** files.

[Request the HelpDesk you need here]

[VCS_CMHD.HTM]

Accesses an informational page for how to request a HelpDesk applet not available by default.

Begin View in HelpDesk User's Context

[HDUSRCTX.DSR]

This example HelpDesk allows you to start the operating user's view in the context where the HelpDesk user is located. You can customize this example or build your own with the **Designer**. You can limit the list of users by numerous attributes, including the length of the login name, whether or not the account is locked, if the login name does not contain "admin", etc.

Change User Volume Space Restrictions Via NLM

[VOLRESN7.DSR]

Select from a list of attached servers and their volumes to find users with volume space restrictions, what they are, and how the space is being used.

IMPORTANT: To change the space restrictions with this applet, **CVMONE.NLM** (version 1.69 or later) must be loaded on the server that hosts the volume. Modifications to the user's disk space restrictions are routed to **CVMONE.NLM**.

Clear Connections Via NLM

[CLRVNLM.DSR]

Lets the user of this applet clear the NetWare connections using **CVMONE.NLM**.

IMPORTANT: **CVMONE.NLM** (version 1.59 or later) must be loaded on each server where connections are to be cleared.

Create Users Via NLM

[CUVNLM .DSR]

Lets users with Browse and Read rights create user objects in an eDirectory/NDS Tree using **CVMONE.NLM**.

IMPORTANT: Before you can use this applet, you must edit it in the **Designer** to specify a server in the eDirectory/NDS Tree on which **CVMONE.NLM** is loaded.

Create Users via NLM with Template

[CUWTNLM1 .DSR]

This HelpDesk applet can be used to create users with a template via **CVMONE.NLM**.

IMPORTANT: Before you can use this applet, you must edit it in the **Designer** to specify a server in the eDirectory/NDS Tree on which **CVMONE.NLM** (version 1.69 or later) is loaded as well as the name of the template to use.

GroupWise Dist. List Membership

[GWDLMEM .DSR]

This sample applet allows you to manage the membership of your GroupWise distribution lists.

IMPORTANT: This applet requires that GroupWise version 5.5 DLLs be present in your DSRAZOR directory. You can use these DLLs with GroupWise versions 5.5 through 6.5.

GroupWise Password Management

[GWPWDM3 .DSR]

Allows HelpDesk to administer GroupWise and eDirectory/NDS passwords.

IMPORTANT: Some buttons of this applet use the GroupWise client on your workstation. Other buttons require that GroupWise version 5.5 DLLs be present in your DSRAZOR directory. You can use these DLLs with GroupWise versions 5.5 through 6.5.

GroupWise User's Dist. List Mgmt

[GWDLMGR1 .DSR]

Allows HelpDesk to manage individual user GroupWise distribution lists.

IMPORTANT: This applet requires that GroupWise version 5.5 DLLs be present in your DSRAZOR directory. You can use these DLLs with GroupWise versions 5.5 through 6.5.

List Users by Group Membership

[GRPLSTA.DSR]

To specify the desired groups, you must customize this sample applet to your eDirectory/NDS using the **Designer**.

My Print Queue Management

[MYQUEUE.DSR]

This simple applet will allow you to manipulate your own print jobs.

My Profile - Current Activity

[MYPROFL1.DSR]

Displays who the user of this applet is to eDirectory/NDS, what servers the user is attached to, and the user's current drive mappings and printer captures.

NDPS + or - to Users Workstation via NLM

[HDNDPS2.DSR]

This applet demonstrates the addition and removal of NDPS printers to a user's workstation. It can also be used to set the default NDPS printer.

IMPORTANT: For this applet to operate properly, **CVMONE.NLM** (version 1.70f or later) must be loaded. You must edit this applet in the **Designer** to specify which server the **NLM** is loaded on.

NDPS Print Job Manager

[NDPS2A.DSR]

This example applet demonstrates how to manage NDPS print jobs.

Pass NDS Attribute as Parameter to EXE

[PASS1.DSR]

Lists all accounts in a selected container branch that have a network address. This applet serves as an example of how to pass almost any eDirectory/NDS attribute as a parameter to an **EXE** file; this applet passes the network address.

IMPORTANT: To specify the executable file, you must edit this applet in the **Designer**.

Print Queue Manager

[QMAN4.DSR]

Manages print jobs (hold, resume, delete) and sends a test page to a queue. You can customize this applet in the **Designer** to show only those containers where print queues are kept.

Search for Users to Manage

[HDSRCH2.DSR]

Searches for any user object (within an eDirectory/NDS Tree or a selected container and subcontainers) by name match, whether partial or exact. Allows you to manage selected users (e.g. change their passwords, view their login time restrictions, etc.)

User Group Details

[HELPD2.DSR]

Lists groups (within an eDirectory/NDS Tree or a selected container and subcontainers) and displays details.

User Mgmt + Disk Space Restrictions

[HELPD1B.DSR]

Finds users in a selected container and permits your HelpDesk users to manage them. Edit this applet in the **Designer** to limit the list of users by numerous attributes, including the length of login name, whether or not the account is locked, if the login name does not contain "admin", etc. You can also edit this applet in the **Designer** to include different function buttons, such as enabling and disabling eDirectory/NDS accounts, changing telephone numbers, etc.

View NCP File Opens/Close Activity

[PACKETS.DSR]

Allows you to select an attached server, select a connection to watch, click **Start NCP Monitoring**, and watch the File Open/Close activity. This can help you debug problems at a workstation if you are having trouble with an application running from the selected server.

ZEN Remote Control / Remote View by User

[ZENRCRVU.DSR]

Lets your HelpDesk access ZENworks workstations without having to use ConsoleOne or NWADMIN. This applet is set to look for the executable on the **Z:** drive, but you can change the drive letter in the **Designer**, if necessary. You can also change the buttons to use **CVMONE.NLM** Zero Privilege HelpDesk. This applet is set up by the user.

ZEN Remote Control / Remote View by Workstation

[ZENRCRV.DSR]

Lets your HelpDesk access ZENworks workstations without having to use ConsoleOne or NWADMIN. You can customize this applet in the **Designer** to show only the ZENworks workstation containers rather than the entire eDirectory/NDS Tree. You can also change the buttons to use **CVMONE.NLM**. This applet is set to look for the **EXE** on the **Z:** drive, but you can change the drive letter in the **Designer**, if necessary. This applet is set up by workstation.

This applet is also listed in the [Category: ZENworks Maintenance](#) section.

Zero Priv – Import w/ Random Passwords

[ZPHDIRP.DSR]

This Zero Privilege applet allows you to import users with randomly generated passwords that your HelpDesk operator cannot find out. Passwords are generated and created via the **CVMONE.NLM** and are stored in the **SYS:SYSTEM** directory.

IMPORTANT: Before you can use this applet, you must edit it in the **Designer** to specify a server in the eDirectory/NDS Tree on which **CVMONE.NLM** is loaded.

Zero Priv – Use Preset Values

[ZPHDPS.DSR]

Includes two methods of using rules to prevent the HelpDesk user from violating business standards. For example, in this solution, the user can only assign grace logins of exactly five, and the user can only reset the maximum concurrent logins to two.

IMPORTANT: Before you can use this applet, you must edit it in the **Designer** to specify a server in the eDirectory/NDS Tree on which **CVMONE.NLM** is loaded.

Zero Privilege HelpDesk (Uses NLM)

[HELPDSK2.DSR]

You can customize this example Zero Privilege HelpDesk applet or build your own using the **Designer**. You can limit the list of users by numerous attributes, including the length of the login name, whether or not the account is locked, if the login name does not contain "admin", etc. This example also allows account changes via the **CVMONE.NLM**.

IMPORTANT: Before you can use this applet, you must edit it in the **Designer** to specify a server in the eDirectory/NDS Tree on which **CVMONE.NLM** is loaded.

Category: NDS User Maintenance

The applets available from this menu are useful for maintaining your eDirectory/NDS user objects.

Assign Users Ability to Self Manage

[**SACL1.DSR**]

Lets you select users to self-manage their telephone numbers. This applet serves as an example of how you can allow users to self-manage any eDirectory/NDS attribute. You can also edit this applet in the **Designer** for other attributes, such as title, department, etc. This applet works well in combination with the applet named **User Self-Update of NDS Values** [**MYEDIT1.DSR**].

Change Home Directory Path/Not Volume

[**HOMEF3.DSR**]

This applet allows you to change the **path** of a users' home directory without changing the volume. The affected user must already have a home directory.

If the new path does not exist, it will be created, and the user's current effective file system rights (to the old directory) will be applied to the new path so that the new home directory can be used right away.

Change Home Directory Volume/Not Path

[**HOMEV3.DSR**]

This applet allows you to change the **volume** for a user's home directory without changing the path. The affected user must already have a home directory.

If the new path does not exist, it will be created, and the user's current effective file system rights (to the old directory) will be applied to the new path so that the new home directory can be used right away.

Change Selected Attributes for Users - Mass

[**MASSCHG6.DSR**]

Changes attributes for individual users, all users (using **Change Attributes for All users in container** button), or selected users (using the **Change Attributes for "Selected" NDS Object** button). By default, you can use this applet to change the password, intruder lockout, login time restrictions, minimum password length, password expiration, OU (department), message server, home directory, and employee ID. To customize which attributes are displayed and modified, edit this applet in the **Designer**.

Change Selected Multi-Valued Attributes

[MULTVAL1.DSR]

This applet allows you to add or remove values to multi-valued attributes, such as phone numbers. You can edit this applet in the **Designer** to make it work for any multi-valued attribute, including custom schema items.

Create GroupWise Account for Existing User

[ICG5USR.DSR]

Creates a GroupWise account for an existing eDirectory/NDS user.

Create User Account plus GW with Template

[ICGWUSER.DSR]

Creates eDirectory/NDS user (with or without a template) and GroupWise accounts. You can edit this applet in the **Designer** to specify a template, require that additional user attributes be filled in, or have the applet use the Zero Privilege HelpDesk **CVMONE.NLM**.

Create User Account with Template

[CUTEMPLT.DSR]

This applet serves as an example of what services you would use to create eDirectory/NDS users with templates. You can edit this applet in the **Designer** to specify a template, require that additional user attributes be filled in, or have the applet use the Zero Privilege HelpDesk **CVMONE.NLM**.

Create User w/ Runtime Chosen Template

[CUT3A.DSR]

Creates eDirectory/NDS users with a template. Similar to the applet named **Create User Account with Template**, except that this applet lets the user select the eDirectory/NDS template so that you do not have to specify the template name in the **Designer**.

Create Users with NLM/Template/Attributes

[CUTANLM2.DSR]

This HelpDesk applet can be used to create a user with a template via **CVMONE.NLM**. You may select the template at runtime, or you may predefine the template name in the **Designer**.

IMPORTANT: You must edit this applet in the **Designer** to indicate the server in the eDirectory/NDS Tree on which **CVMONE.NLM** (version 1.69 or later) is loaded.

This applet is currently set to require that the HelpDesk user types in the login name, last name, first name, full name, and title prior to creating the user. You can change this applet in the **Designer** to include any attributes you want to require for user creation.

Create Users with Required Attributes

[CURA3A.DSR]

Creates a user with required attributes. The Location field shows how you can optionally include a list of pre-defined values for any attribute.

NOTE: This applet forces filling in required attributes into the form. To include almost any eDirectory/NDS attribute or to have the applet use a template or use **CVMONE.NLM**, you must edit the applet in the **Designer**.

Group Membership (Add, Create, Delete)

[GRP_AD2.DSR]

Creates a new group in a specified container and allows you to add and delete objects from eDirectory/NDS group membership.

Import Group Members from CSV File

[GRPMIMP2.DSR]

Imports members to a group from a comma-delimited file. The file name must use a ***.CSV** extension. For an example, see **GRPIMP.CSV** in the DSRAZOR installation directory. To use this applet without any editing, the **CSV** file must use the following format:

```
group.hr.acme,newmember1.container.location,  
group.hr.acme,newmember2.container.location,  
group.hr.acme,newmember3.container.location,
```

where *user* (*newmember*) is a fully qualified eDirectory/NDS user. The group name can be fully qualified (choose Root when running the applet) or can just be relative name (choose the container for the groups when running the applet).

If your **CSV** file is a different format (using quotation marks or Excel style), you can edit this applet in the **Designer** to accept a different **CSV** format.

Import GW Distribution List Members from CSV

[UIGWDL.DSR]

Imports or deletes members from GroupWise distribution lists from **CSV** file. The file name must use a ***.CSV** extension. For an example, see **UIGWDL.CSV** in the DSRAZOR installation directory. To use this applet without any editing, the **CSV** file must use the following Excel-style format:

```
CCuser1.ou.org  
TUser2.ou.org  
BCuser3.ou.org
```

If your **CSV** file is a different format (using quotation marks or Excel style), you can edit this applet in the **Designer** to accept a different **CSV** format.

IMPORTANT: This applet requires tokens from **both** DSRAZOR for GroupWise and DSRAZOR for eDirectory/NDS and NetWare.

Import NDS Password to New or Existing Accounts

[UIMPP.DSR]

Imports users' passwords and/or users from a comma-delimited file. Imports using or not using an eDirectory/NDS template. The file name must use a *.CSV extension. For an example, see **PWD_EX.CSV** in the DSRAZOR installation directory. To use this applet without any editing, the CSV file must use the following format:

```
"user1" ,"pwd1" ,  
"user2" ,"pwd3" ,
```

where *user* is a fully qualified eDirectory/NDS user name and *pwd* is the user's password. For an example, see **PWD_EX.CSV** in the DSRAZOR installation directory.

If your CSV file does not have quotation marks, you can edit the applet in the **Designer** to accept a different CSV format.

To import using an eDirectory/NDS template, edit the **Mass User Create with Template** button in the **Designer** to use the appropriate template.

Import NIMS List Users from CSV File

[UI_NIMS.DSR]

Imports NetWare Instant Messaging Service (NIMS) users from a comma-delimited file to a selected file. Also, creates or deletes list users in the selected container. The imported file name must use a *.CSV extension. For an example, see **NIMS.CSV** in the DSRAZOR installation directory. To use this applet without any editing, the CSV file must use the following format:

```
test.user@acme.com,Jack Smith,20,0,  
another@sundown.com.uk,None,20,0,  
781110.835@bigtest.com,Ralph White,20,0,
```

If your CSV file is a different format (using quotation marks or Excel style), you can edit this applet in the **Designer** to accept a different CSV format.

The *ListUserOptions* and the *ListUserAdminOptions* attributes define the options you see when you create a NIMS list user with NWADMIN.

Import Org Role Occupants from CSV

[IMPORG.DSR]

Imports *Organizational Roles* and the *Occupants* of those roles into your eDirectory/NDS and sets the security equivalence. The imported file name must use a *.CSV extension. For an example, see **IMPORG.CSV** in the DSRAZOR installation directory. To use this applet without any editing, the CSV file must use the following Excel-style format:

```
TESTOrgRole ,user1.ou.org ,user2.ou4.org6 ,user3.ou.org  
OrgRole1 ,user1.ou.org ,user2.ou.org ,user3.ou.org  
OrgRole37 ,user6.ou2.org3 ,user1.ou.org ,user2.ou.orgB
```

If your **CSV** file is a different format (using quotation marks or edited in an application other than Excel), you can edit this applet in the **Designer** to accept a different **CSV** format.

Import Users + Attributes from CSV File

[UIMP1.DSR]

Imports users and their attributes from a comma-delimited file. Imports using or not using an eDirectory/NDS template. The imported file name must use a ***.CSV** extension. For an example, see **EXAMPLE.CSV** in the DSRAZOR installation directory. To use this applet without any editing, the **CSV** file must use the following format:

```
"User1", "Last Name", "Dept A", "444-3333",  
"User2", "Smith", "Dept B", "888-3333",  
"User3", "Jones", "Dept C", "Ext. 78",
```

If your **CSV** file does not have quotation marks, you can edit the applet in the **Designer** to accept a different **CSV** format.

To import using an eDirectory/NDS template, edit the **Mass User Create with Template** button in the **Designer** to use the appropriate template.

Import Users + GroupWise Acct from CSV File

[GWIU.DSR]

This sample applet imports eDirectory/NDS users plus GroupWise users. The imported file name must use a ***.CSV** extension. For an example, see **GWIU.CSV** in the DSRAZOR installation directory. To use this applet without any editing, the **CSV** file must use the following Excel-style format:

```
z_slow_1, last name 1, dept 1, 444-4444, .rhpo.any_org, Post  
Office  
z_slow_2, last name 2, dept 2, 554-4444, .rhpo.any_org, System  
z_slow_3, last name 3, dept 3, 334-4444, .rhpo.any_org, Domain  
z_slow_4, last name 4, dept 4, 114-4444, .rhpo.any_org, System  
z_slow_5, last name 5, dept 5, 774-4444, .rhpo.any_org, Post  
Office
```

When importing GroupWise users, you must specify the fully distinguished name of the GroupWise Post Office to import the GroupWise users into. You may optionally specify the GroupWise visibility to set the new user accounts to. If no GroupWise visibility is specified, the default is *System*.

IMPORTANT: This applet requires that the GroupWise client be loaded on the workstation where used.

Import Users + GW Dist List Membership from CSV

[**UIGW.DSR**]

Imports users from **CSV** file and sets attributes, including distribution list membership. This applet is set to import from an Excel-style **CSV** file, but you can edit the applet in the **Designer** to accept a different **CSV** format. For an example, see **UIGW.CSV** in the DSRAZOR installation directory. The file must use the following format:

```
user1,LastName1,DeptA,444-4444,GWPostOfficeName.ou.org,System,CCdistributionlistname1.ou.org  
user2,LastName2,DeptB,444-4455,GWPostOfficeName.ou.org,Domain,TODistributionlistname1.ou.org  
user3,LastName3,DeptC,444-4466,GWPostOfficeName.ou.org,Post Office,BCdistributionlistname2.ou.org
```

IMPORTANT: This applet requires tokens from **both** DSRAZOR for GroupWise and DSRAZOR for eDirectory/NDS.

Import Users w/Home Dir (HD=Attribute)

[**UIMPOA.DSR**]

Lets the applet user import eDirectory/NDS users from a comma-delimited file and define their home directory at the same time. The home directory is automatically given the value of the named Attribute. For an example, see **UIMPOA.CSV** in the DSRAZOR installation directory. The file must use the following format:

```
six,my ou,Yourserver_sys.anyorg:users\sales+ou  
ten,your ou,Yourserver_sys.anyorg:homedirs\engg+title
```

By default, this applet imports from Excel-style comma-delimited files. To change to a different **CSV** format, edit the ListView control in the **Designer**.

Import Users w/Home Dir (HD=LoginID)

[**UIMPHD.DSR**]

Demonstrates how to import users and assign a home directory name based on Login ID. This applet also demonstrates how to assign a random password. The file name must use a ***.CSV** extension. For an example, see **UIMPHD.CSV** in the DSRAZOR installation directory. To use this applet without any editing, the **CSV** file must use the following Excel-style format:

```
uone,password,Yourserver_sys.anyorg:users\sales  
utwo, ,Yourserver_sys.anyorg:homedirs\engg  
uthree,never omit this  
column,yourserver_sys.anyorg:homedirs\develop
```

If your **CSV** file is a different format (using quotation marks or edited in an application other than Excel), you can edit this applet in the **Designer** to accept a different **CSV** format.

Import Users w/ Runtime Selected Template

[UIMPT1.DSR]

Imports users' attributes from a comma-delimited file using a selected eDirectory/NDS template. The file name must use a *.CSV extension. For an example, see **EXAMPLE.CSV** in the DSRAZOR installation directory. To use this applet without any editing, the CSV file must use the following format:

```
"User1", "Last Name", "Dept A", "444-3333",  
"User2", "Smith", "Dept B", "888-3333",  
"User3", "Jones", "Dept C", "Ext. 78",
```

You can edit this applet in the **Designer** to change the CSV format or add different attributes that you may want to import, such as full name, title, etc.

Import Users w/Runtime Template via NLM

[UIMP.nlm1.DSR]

Imports users' attributes from a comma-delimited file using a selected eDirectory/NDS template via the **CVMONE.NLM**.

IMPORTANT: You must edit this applet in the **Designer** to specify which server the **NLM** is loaded on.

The file name must use a *.CSV extension. For an example, see **EXAMPLE.CSV** in the DSRAZOR installation directory. By default, the CSV file must use the following format:

```
"User1", "Last Name", "Dept A", "444-3333",  
"User2", "Smith", "Dept B", "888-3333",  
"User3", "Jones", "Dept C", "Ext. 78",
```

You can edit this applet in the **Designer** to change the CSV format or add different attributes that you may want to import, such as full name, title, etc.

Login Scripts Compare/Replace

[LSCORR1.DSR]

Lets you select a login script as a master and then choose to *either*:

- Compare the master to **all** the login scripts in a selected container

OR

- Replace **all** the login scripts within a container with the master login script

IMPORTANT: This solution will compare/replace login scripts for **all** types of objects (user, container, etc.). To limit the login scripts to a particular type of object, edit the appropriate rule in this solution.

This applet handles login scripts that are less than 4096 bytes.

Maintain Users' Home Directory

[USERHD.DSR]

Displays files in the home directory of a selected eDirectory/NDS user. Manages files therein. Does not display subdirectories.

Mass NDS Password Change

[MASSP1.DSR]

Allows changing the eDirectory/NDS passwords of any or all the users in a container branch.

Search and Replace on Login Scripts

[SR1.DSR]

Searches a container branch for login scripts containing the text that you specify and replaces it with new text that you specify.

Search and Replace on Text-based Attributes

[SR2.DSR]

Queries a container branch for users with a Location attribute value that contains an entered string and allows you to replace it with a new string. To query for other attribute types, edit the button control in the **Designer**.

Set GroupWise Visibility

[NGWVIS.DSR]

This applet is designed to walk eDirectory/NDS to select GroupWise users to manage address book visibility.

IMPORTANT: This applet requires that the GroupWise client be loaded on the workstation.

Smart Delete NDS Acct, Home Dir + GroupWise Acct

[SMRTDEL2.DSR]

Displays all users (except for those with "admin" in their names) in the selected container and deletes any or all of them with their home directory structure (all files and all subdirectories) and their GroupWise accounts. You can delete a GroupWise account via the GroupWise client on the workstation or via the GroupWise 5.5 admin DLLs copied into your DSRAZOR directory. You can use the GroupWise 5.5 DLLs with GroupWise versions 5.5 through 6.5. Use the **Select All** option to quickly select all users for deletion.

Updating User's Full Name

[UPFULLNM.DSR]

Updates a user's Full Name attribute value. Select your container and then select the user to update. Edit the **Update Single Full Name** button control to change other attribute values (e.g. Phone Number, Last Name, Department).

Updating Users' Phone Number

[UPPHONE.DSR]

Updates a user's Phone Number attribute value. Select your container and then select the user to update. Edits the **Update Phone Now** button control to update other text-based attribute values (e.g. Full Name, Last Name, Department).

IMPORTANT: If multiple phone numbers are defined, use the **Update Multiple Phone Numbers** option.

User Self-Update of GroupWise Dist. Lists

[MYGWDL.DSR]

Allows an individual user with **Write** privileges to maintain membership of only GroupWise distribution lists that user belongs to.

IMPORTANT: This applet requires that GroupWise version 5.5 DLLs be copied into your DSRAZOR directory. You can use these DLLs with GroupWise versions 5.5 through 6.5.

User Self-Update of NDS Password

[USR_PWD.DSR]

Allows an individual user with **Write** privileges to maintain only that user's own eDirectory/NDS password. You can save this applet as an **EXE** to distribute to users so that they do not need to install DSRAZOR on their workstations.

User Self-Update of NDS Values

[MYEDIT1.DSR]

Allows an individual user with **Write** privileges to maintain only that user's own eDirectory/NDS details (title, department, phone, fax, and email). You can edit this applet in the **Designer** to include the attributes that you need; then, you can save it as an **EXE** to distribute to users so that they do not need to install DSRAZOR on their workstations. This applet works well in combination with the applet named **Assign Users Ability to Self Manage** [SACL1.DSR].

View Home Directory Sizes

[HOMED1B.DSR]

Displays how much space is in use for selected users' home directories.

Category: Examine Servers/Disks

The applets available from this menu are useful for maintaining and examining your servers, volumes, files, disk space, and connections.

Compressed vs. Uncompressed Dir Sizes

[DIRSIZE1.DSR]

This solution will help you find what directory space restrictions you have set and allow you to quickly change them. Further, this solution can show you the actual amount of disk space in use (i.e. includes knowledge of file compression).

You can easily modify this solution to reveal uncompressed sizes (that is, the space needed if all files were uncompressed).

Connection Stats (Bindery or NDS Logins)

[SRVCON2.DSR]

Lists the connection statistics (time since last login, number of files opened, total request packets, etc.) of users on a selected server.

Count NetWare Servers

[SCOUNT5.DSR]

This solution is used to count the number of NetWare servers (a) in the entire network, (b) in a specific eDirectory/NDS Tree, and (c) in a selected container and its subcontainers. This applet is useful for determining how many DSRAZOR server licenses are required.

Directory Space Restrictions

[DIRSPC3.DSR]

This applet will help you find directories with directory space restrictions, display the restrictions and current space in use, and modify directory space restrictions.

Disk Space in Use, Files Owned/Unowned

[VOLSPC5.DSR]

This applet allows you to select from a list of attached servers and their volumes to view who is using the space on the volume.

Disk Space Restrictions + Manage

[VOLREST2.DSR]

This applet allows you to select from a list of attached servers and their volumes to find users with volume space restrictions, what those restrictions are, and how the space is being used.

Document DHCP Leases

[DHCP.DSR]

This applet allows you to search for and display DHCP addresses for your network. You may start at the Root of the Tree or treewalk to a lower container to decrease the search time. You may display all of the information or only information for IP address with "host names" assigned.

Document Server Security SET Parameters

[SSET1.DSR]

This applet lists your servers and some of the Server SET Parameter values. You can edit this applet to include additional Server SET Parameters.

Enterprise File Server Status

[BUS5B.DSR]

This applets shows information about your NetWare file servers. The first screen only shows the servers you are authenticated to. The second screen shows all of your NetWare file servers.

Enterprise Volume Space Report

[VOLVIEW2.DSR]

Searches an eDirectory/NDS Tree for all volumes and displays the space in use, space available, and percent full. This utility includes the ability to see the space usage breakdown by user.

NOTE: You can edit this applet in the **Designer** so that it includes rules allowing only specific volumes into the list, such as those with a name containing "SYS", or you can edit the volume list file so that it includes only the volumes that you want to monitor.

File Extensions in Use - Count Each

[FILE-EX1.DSR]

Lists the file extensions on a selected volume as well as the number of files of each type and how much space is being used by each extension type.

Find All Print Servers, Printers & Queues

[PSPQ.DSR]

Finds all print servers, printers and queues.

Find All User Connections Using IPX

[**ANYIPX1.DSR**]

Lists all users in a container with IPX addresses. You can edit this applet in the **Designer** to find IP addresses instead, if desired.

Find Directories with an Inheritance Filter

[**IF3.DSR**]

Searches a selected volume for directories with an Inheritance Filter (IF).

IMPORTANT: To change the directory depth, you must edit the service – not the rule – in the **Designer**.

Find Files Ending with MP3 (or Other Extension)

[**MP3SRCH.DSR**]

This applet will search a volume for files with an **MP3** extension. The results are currently sent directly to a ***.CSV** file, but this can be modified to send them to a ***.TXT** file or display them onscreen. This applet can also be modified to search for different file extensions or to search multiple volumes and/or servers.

Find Files Greater than 1MB in Size

[**LRGSRCH.DSR**]

This applet will search a volume for files larger than 1 MB. The results are currently sent directly to a ***.CSV** file, but this can be modified to send them to a ***.TXT** file or display them onscreen. The applet can also be modified to search for files of a different size or to search multiple volumes and/or servers.

Find Files Unused for Past 365 Days

[**FILES365.DSR**]

This solution will scan the files on the selected volume and return all where the Last Access Date (i.e. the last time the file was **opened**) is more than 365 days ago. You can edit this applet in the **Designer** to change the number of days, change the search item to Last Date Modified, or add a button allowing you to delete the files.

Hung Login Scripts (SYS:_NETWARE Files Open)

[**SYSNW.DSR**]

While a user is logging in to a server, a file is opened in **SYS:_NETWARE**. This applet lists all files open in this location. Use this applet to find hung login scripts.

IMPORTANT: This applet requires that **CVMONE.NLM** (version 1.61 or later) be loaded.

Logging File Usage

[LOGFILE.DSR]

This sample applet demonstrates choosing a file and then viewing that file's active users. You can click on the **Log** button and log the active users. You can set the log to record users at a specified interval. As long as this screen is active, the logging will occur.

NLM Interdependencies

[NLMS2.DSR]

Lists the NLMs on a selected server; that are dependent on a selected NLM; and that require a selected NLM to be loaded before they can be loaded.

IMPORTANT: This applet requires that **CVMONE.NLM** be loaded on the servers that you want to query.

Purgeable Space Report

[PURGER1.DSR]

Lists purgeable space on each volume of a selected server. Also lists space that cannot be purged.

Send Commands to Server w/o RConsole

[NCF1.DSR]

Allows you to enter a command line to send to a list of NetWare servers. RCONSOLE is not needed.

IMPORTANT: To use this application successfully, the user must have **Console Operator** privileges (or better).

Simple Software Metering Example

[METER1.DSR]

This example applet demonstrates what services to use in order to create a simple software-metering activity logger.

IMPORTANT: Before using this applet, you must edit it in the **Designer** to indicate which files to monitor.

Simple Volume % Full Monitor

[VOLMON.DSR]

Displays the space in use for all the volumes in up to four different attached servers. If you want this applet to display more servers, edit it in the **Designer**.

Specific, Interactive File Usage

[FILENOW.DSR]

Monitors activity on files that are specified “on the fly” without having to edit the applet. Also displays the active users of a selected file. The files you select can be on any NetWare file server to which you can be authenticated.

View File Details Per Directory

[FILEUSE.DSR]

Views file usage details in a selected directory.

Who Has Open Files by Connection

[WHO.DSR]

Displays connections (such as an eDirectory/NDS user) to attached servers and the files they are using or have open. Of the listed files, select a file to show other eDirectory/NDS users that have it open. Allows you to select a file that a user has open and display who else has it open. Lets you send a message to a file’s users. Displays a report on how the Send Message functioned.

Who Has Selected File Open

[DIROPEN.DSR]

Displays files on attached servers. Allows you to select a file and view who else is using that file. Lets you send a message to a file’s users. Displays a report on how the Send Message functioned.

Category: ZENworks Maintenance

The applets available from this menu are useful for maintaining your ZENworks objects.

Add/Delete ZEN (NAL) Apps from Users

[NAL_AD1.DSR]

Lists all user and group objects that can contain NAL associations and permits adding or removing NAL associations from user and group objects.

IMPORTANT: You must this applet in the **Designer** to specify which container houses your applications.

Copy ZEN Objects (Within Same Tree)

[COPYZ43.DSR]

This is an intelligent object copy for ZENworks packages and applications. This applet can be modified to work with any eDirectory/NDS object, but, for those objects, only a simple copy will be performed. No attempt will be made to resolve potential conflicts in copying other object types, such as groups.

Inherited NAL Applications

[NAL4.DSR]

Lists inherited NAL applications for a selected user. Lists all users in a selected group and inherited NAL applications common to all members.

NAL Objects and Associations

[NAKASC1B.DSR]

Finds all NAL objects with associations within a selected container branch. You can display NAL objects in a ListView or a TreeView. Select a NAL object to view its associations.

NAL Objects and Details

[NALLIST2.DSR]

Finds all NAL objects within a selected container branch and displays their details. Select a NAL object to view its contacts.

NAL Objects Search by Description

[NALSRCH.DSR]

Queries NAL objects based on Attribute within a selected container branch. You can query for a specific caption, contact, or description. Select a NAL object to view its contacts.

NAL Objects with NO Associations

[NAL0ASO3.DSR]

Finds NAL objects with no associations within a selected container branch. Select a NAL object to view its contacts.

NAL Objects with NO Folder Associations

[NAL-FOLD.DSR]

Finds NAL objects with no folder associations within a selected container branch.

NAL Users and Their Associations

[NAL-USR2.DSR]

This solution will list your eDirectory/NDS users and show what NAL object associations have been defined for each.

ZEN Remote Control/Remote View by User

[ZENCRVU.DSR]

Lets your HelpDesk access ZENworks workstations without having to use ConsoleOne or NWADMIN. You can change the buttons to use **CVMONE.NLM** Zero Privilege HelpDesk. This applet is set to look for the executable on the **Z:** drive, but you can change the drive letter in the **Designer**, if necessary. This applet is set up by user.

ZEN Remote Control/Remote View by Workstation

[ZENRCRV.DSR]

Lets your HelpDesk access ZENworks workstations without having to use ConsoleOne or NWADMIN. You can customize this applet in the **Designer** to show only the ZENworks workstation containers rather than the entire eDirectory/NDS Tree. You can also change the buttons to use **CVMONE.NLM**. This applet is set to look for the executable on the **Z:** drive, but you can change the drive letter in the **Designer**, if necessary. This applet is set up by workstation.

ZEN Workstations and Details

[ZENDET1.DSR]

This applet will help you quickly find and document all ZENworks workstation objects in your eDirectory/NDS Tree. You also have the option to delete selected workstation objects.

